



7 Onslow Road, Clydebank, G81 2NE

Offers over £64,995



****SOLD BY ELEVATE PROPERTY - SIMILAR PROPERTIES REQUIRED - INVESTORS WAITING****



Property Description

Welcome to No. 7 Onslow Road, this attractive TWO-bedroom ground floor home offers an ideal opportunity for first-time buyers, and investors. The property is situated within the popular Drumry/Clydebank locale and is a short distance from a host of amenities and public transport links.

To the front of the home is a low maintenance garden and adequate on street parking. Entrance is through the welcoming reception hallway offering access to all rooms within the property. The lounge offers impressive dimensions, with feature fireplace and large panoramic window, flooding this room with an abundance of natural light.

The modern fitted kitchen hosts an array of wood-effect wall and base mounted units paired with light worktop, creating an efficient workspace. The kitchen also boasts an integrated fridge-freezer, electric oven/grill, gas hob, extractor fan and space for washing machine.

The home is complimented by two generously proportioned bedrooms, one with fitted storage. Completing this property is a charming fully tiled bathroom, comprising of gas shower over bath, W.C. and wash-hand basin.

There is fantastic storage within the property and an additional storage facility within the communal close. The apartment also benefits from gas central heating and double glazing throughout, providing all rooms with a lovely warmth all year round.

Ideally situated within walking distance of Drumry train station, Early Learning and Childcare Centres, Primary and Secondary Schools and a host of amenities, this property is in a perfect location for many purchasers.

We would highly recommend an early viewing as have no doubt this property will be very popular. Viewing by appointment - please contact Elevate Property Services to arrange a suitable time or request further information and a copy of the Home Report.

Any areas, measurements or distances quoted are approximate and floor Plans are only for illustration purposes and are not to scale. Thank you.

THESE PARTICULARS ARE ISSUED IN GOOD FAITH BUT DO NOT CONSTITUTE REPRESENTATIONS OF FACT OR FORM PART OF ANY OFFER OR CONTRACT.

Room Dimensions

Lounge – 4.57m x 3.78m

Kitchen – 2.83m x 2.79m

Bedroom One – 5.17m x 3.13m

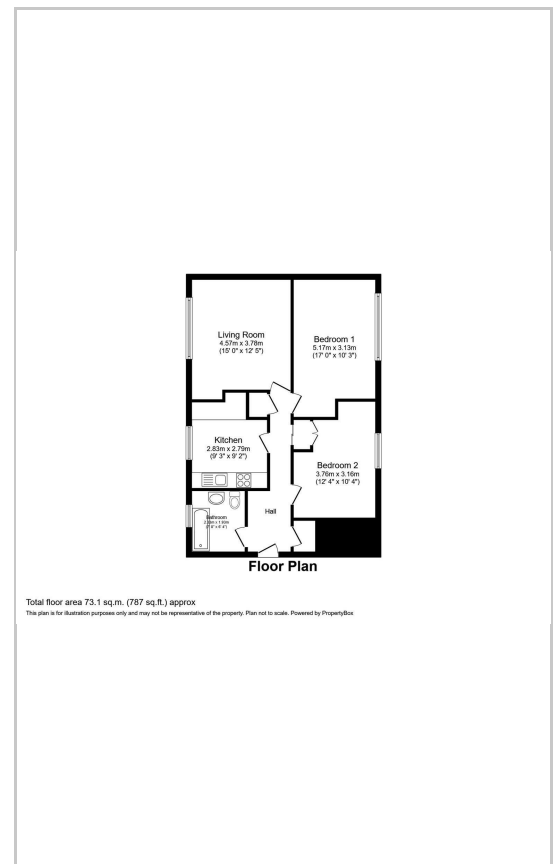
Bedroom Two – 3.76m x 3.16m

Bathroom - 2.33m x 1.93m

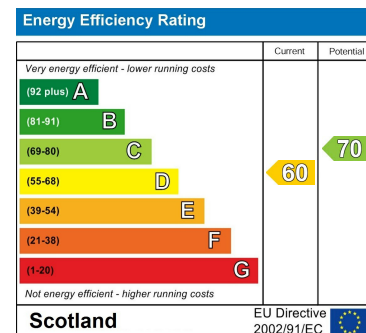
Area Map



Floor Plans



Energy Efficiency Graph



These particulars, whilst believed to be accurate are set out as a general outline only for guidance and do not constitute any part of an offer or contract. Intending purchasers should not rely on them as statements of representation of fact, but must satisfy themselves by inspection or otherwise as to their accuracy. No person in this firm's employment has the authority to make or give any representation or warranty in respect of the property.

8 Hornbeam Drive, Clydebank, West Dunbartonshire, G81 3PH

Tel: 01389 521213 Email: info@elevatepropertyservices.com <https://www.elevatepropertyservices.com/>